

TRB14X

TRB14x device family is designed to provide direct access to various devices from the network. It contains a high performance ARM Cortex-A7 1.2GHz processor and 256 megabytes of RAM. It is equipped with mission-critical LTE capabilities and a Linux environment offering high degree of customization. Devices in the TRB family come with either one of Ethernet, RS232 or RS485 ports offering a specialized solution to a particular problem. TRB family devices are designed to be small, lightweight and energy efficient - allowing you to do IoT projects with ease.

SPECIFICATIONS

TRB140



Ethernet

RJ45 socket, 10/100 Mbps
Ethernet port with auto
MDI/MDIX

Package includes:

Power cable
Magnetic type LTE antenna
Ethernet cable

Hardware

- ARM Cortex-A7 1.2 GHz CPU
- 256 MBytes RAM (50 Mbytes available for users)
- 512 MBytes Flash (70 Mbytes available for users)
- 4 pin industrial DC power socket
- Dual SIM (2FF)
- 1 x SMA for LTE
- Micro-USB connector
- Reset button
- Power, signal, network and data status LEDs

TRB142



RS232

DB9 socket, 5 pin
configuration with
flow control

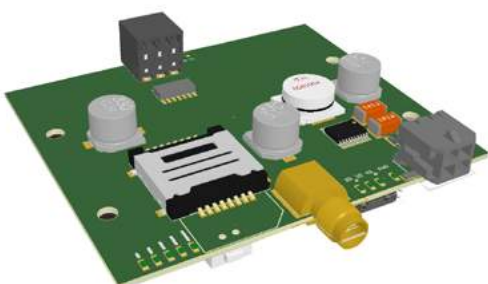
Package includes:

Power cable
Magnetic type LTE antenna

Electrical, Mechanical & Environmental

- Input voltage range 9 - 30 VDC
- Operating temperature -40 C to 75 C
- Storage temperature -45 C to 80 C
- Operating humidity 10% to 90% non-condensing
- Storage humidity 5% to 95% non-condensing
- Dimensions 60 mm x 70 mm x 18 mm
- Weight 100 g

TRB145



RS485

6 pin industrial socket for
2/4 wire RS485

Package includes:

Power cable
Magnetic type LTE antenna
6 pin industrial plug

CELLULAR SPECIFICATIONS

LTE	LTE CAT4 up to 150 Mbps DL LTE CAT4 up to 50 Mbps UL
UMTS/DC-HSPA+	DC-HSDPA up to 42 Mbps (DL) HSUPA up to 5.76 Mbps (UL)
GSM/GPRS/EDGE	EDGE up to 236.8 kbps DL, 236.8 kbps UL

SUPPORTED BANDS

Region (operator)	Frequency
Europe, the Middle East, Africa, Korea, Thailand, India	- FDD-LTE: B1 (2100 MHz)/B3 (1800 MHz)/B5 (850 MHz)/B7 (2600 MHz)/B8 (900 MHz)/B20 (800 MHz) - TDD-LTE: B38 (2600 MHz)/B40 (2300 MHz)/B41 (2500 MHz) - WCDMA: B1 (2100 MHz)/B5 (850 MHz)/B8 (900 MHz) - GSM/EDGE: 900/1800 MHz
North America (AT&T, T-mobile)	- FDD-LTE: B2 (1900 MHz)/B4 (1700 MHz)/B12 (700 MHz) - WCDMA: B2 (1900 MHz)/B4 (1700 MHz)/B5 (850 MHz)
North America (Verizon)	- FDD-LTE: B4 (1700 MHz)/B13 (700 MHz)
Australia (Telstra)	- FDD-LTE: B1 (2100 MHz)/B3 (1800 MHz)/B5 (850 MHz)/B7 (2600 MHz)/B28 (700 MHz) - WCDMA: B1 (2100 MHz)/B5 (850 MHz)
South America, Australia, New Zealand, Taiwan	- FDD-LTE: B1 (2100 MHz)/B2 (1900 MHz)/B3 (1800 MHz)/B4 (1700 MHz)/B5 (850 MHz)/B7 (2600 MHz)/B8 (900 MHz)/B28 (700 MHz) - TDD-LTE: B40 (2300 MHz) - WCDMA: B1 (2100 MHz)/B2 (1900 MHz)/B5 (850 MHz)/B8 (900 MHz) - GSM/EDGE: 850/900/1800/1900 MHz
Japan	- FDD-LTE: B1 (2100 MHz)/B2 (1900 MHz)/B3 (1800 MHz)/B4 (1700 MHz)/B5 (850 MHz)/B7 (2600 MHz)/B8 (900 MHz)/B28 (700 MHz) - TDD-LTE: B40 (2300 MHz) - WCDMA: B1 (2100 MHz)/B6 (800 MHz)/B8 (900 MHz)/B19 (800 MHz)